



2022 Newport To Ensenada, MX Event

April 22-24, 2022

SAILING INSTRUCTIONS – AMENDMENT #1

10. CHECK-IN

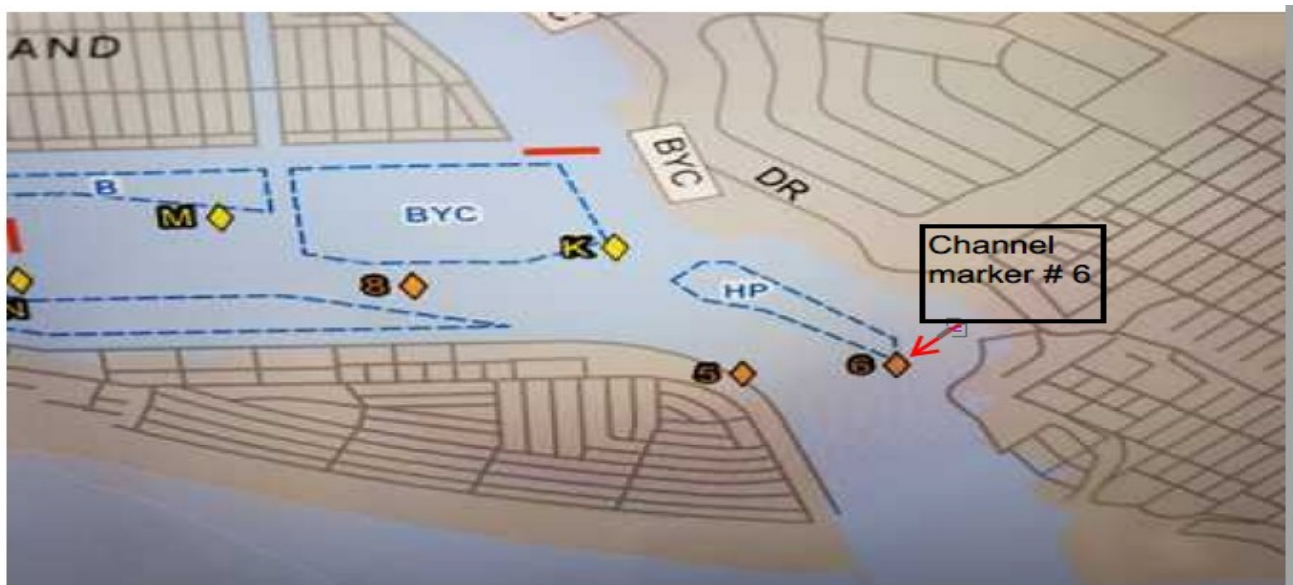
10.1 As shown below, there will be two Check-in vessels; Vessel #1 will be at approximate GPS coordinates 33° 36.052' N and 117° 55.103' W. Vessel #2 will be at approximate GPS coordinates 33° 35.621' N and 117° 53.492' W.

IS REPLACED BY:

10.1 There will be two Check-in vessels.

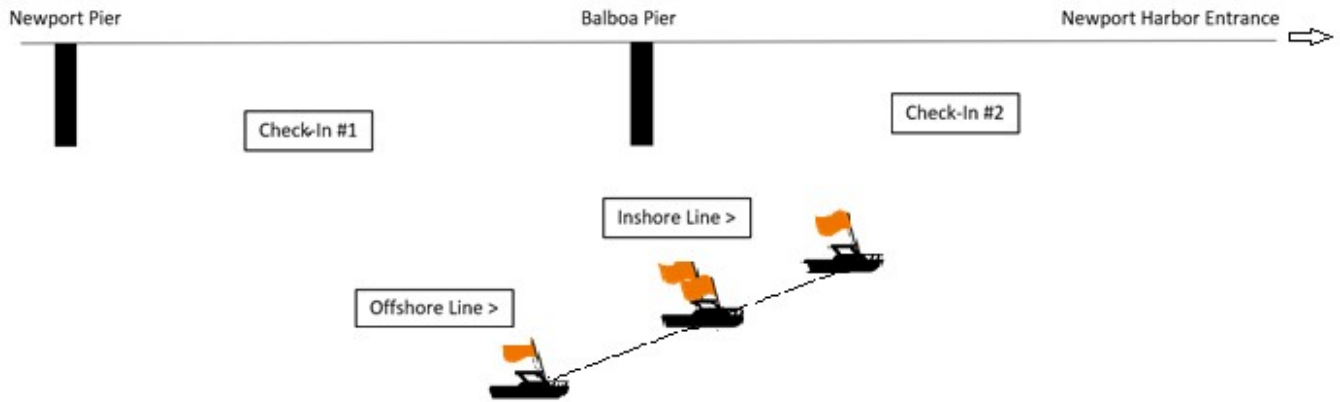
10.1.1 Check-in Vessel #1 will be located between Newport Pier and Balboa Pier at approximate GPS coordinates 33° 36.052' N and 117° 55.103' W. Refer to the diagram in paragraph 11

10.1.2 Check-in Vessel #2 will be located inside Newport Harbor in the vicinity of Mark 6 at approximate GPS coordinates 33° 35.56' N and 117° 52.50' W. Boats exiting Newport Beach harbor should check in with this boat.



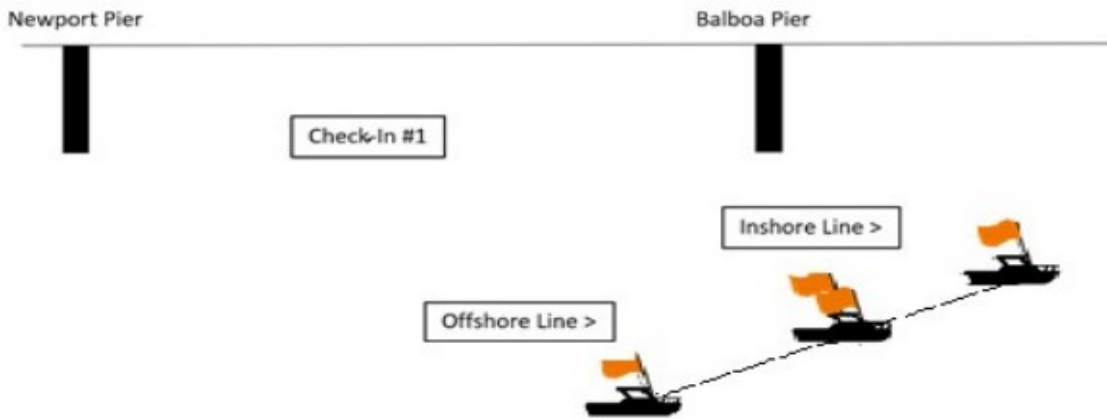
Purpose: For safety purposes, the smaller Check-in boat must the harbor.

11. THE START



IS BEING REPLACED BY:

11. THE START



Purpose: To correctly reflect the position of that Check-in vessel #2 is no longer near the Newport Harbor entrance.