



## 2022 SPRINT To Dana Point Event

April 22, 2022

### SAILING INSTRUCTIONS – AMENDMENT #1

#### ~~9~~ CHECK-IN

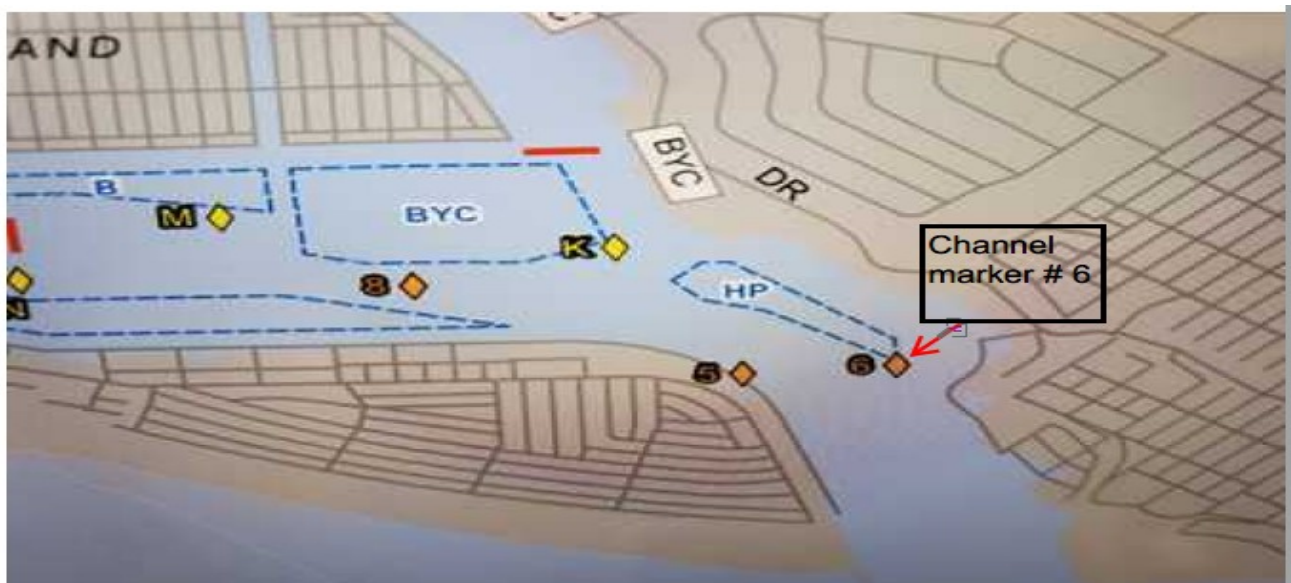
~~9.1~~ As shown below, there will be two Check-in vessels; Vessel #1 will be at approximate GPS coordinates ~~33° 36.052' N and 117° 55.103' W~~. Vessel #2 will be at approximate GPS coordinates ~~33° 35.621' N and 117° 53.492' W~~.

#### IS REPLACED BY:

9.1 There will be two Check-in vessels.

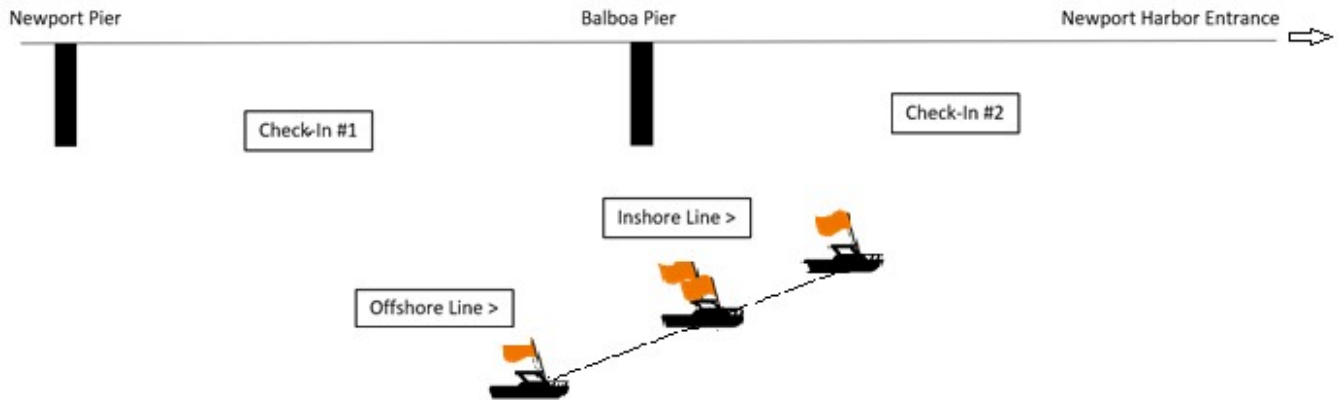
9.1.1 Check-in Vessel #1 will be located between Newport Pier and Balboa Pier at approximate GPS coordinates 33° 36.052' N and 117° 55.103' W. Refer to the diagram in paragraph 10.

9.1.2 Check-in Vessel #2 will be located inside Newport Harbor in the vicinity of Mark 6 at approximate GPS coordinates 33° 35.56' N and 117° 52.50' W. Boats exiting Newport Beach harbor should check in with this boat.



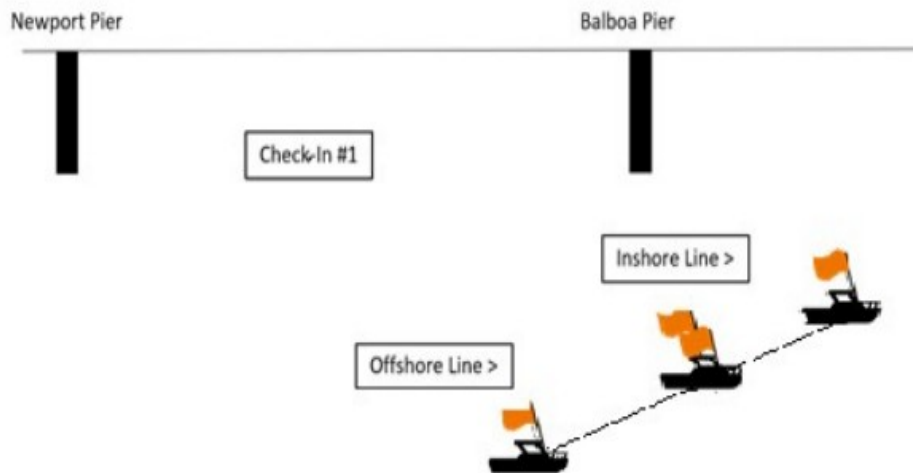
*Purpose: For safety purposes, the smaller Check-in boat must the harbor.*

## 10. THE START



IS BEING REPLACED BY:

## 10. THE START



*Purpose: To correctly reflect the position of that Check-in vessel #2 is no longer near the Newport Harbor entrance.*

---

## 13. THE FINISH

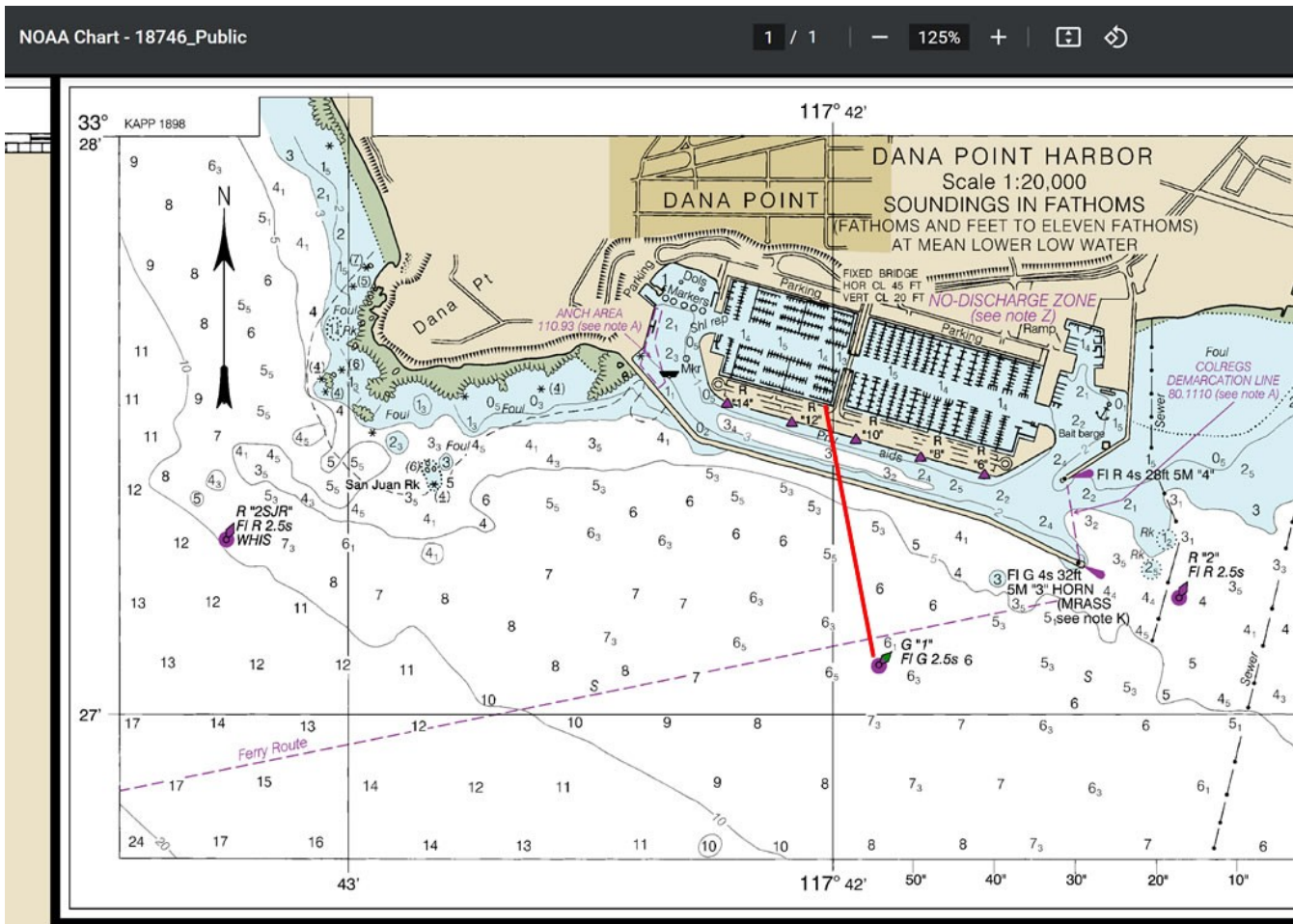
13.2 The finish line shall be between a staff displaying an orange flag on the race committee vessel at the starboard end and the course side of the green light buoy “G-1” mark at the port end. A proper finish will leave the race committee vessel to starboard. **DO NOT CONFUSE this buoy with the entrance light to Dana Point harbor.**

13.3 The area in the vicinity of the Finish Line shall be kept clear of all boats except those finishing. A boat failing to stay clear may be protested by the race committee and may be assigned a thirty (30) minute time penalty by the protest committee following a hearing.

13.4 Boats reporting a Did Not Finish (DNF) or acceptance of a Scoring Penalty at the Finish Line shall stand by and hail the race committee, while remaining outside the Finish Line.

**IS REPLACED BY:**

13.2 The finish line shall be between the Dana Point Harbor outer breakwater at the port end and the course side of the green lighted buoy "G-1" at the starboard end, on a line bearing 355° from the "G-1" buoy to a staff displaying an orange flag on the SW side of the Dana West Yacht Club deck. A proper finish will leave the green lighted buoy "G-1" to starboard. **DO NOT CONFUSE this buoy with the entrance light to Dana Point harbor.**



13.3 The DPYC Finish Line RC will broadcast information on VHF Channel 6 regarding finishing boats. VHF Channel 68 will be used if VHF Channel 6 is not working.

13.4 Boats reporting a Did Not Finish (DNF) or acceptance of a Scoring Penalty at the Finish Line shall hail the race committee until recognized and reported.

*Purpose: To reflect the Finish Line when an RC boat is not on station.*

---